

# 2018 CITATION M2

SERIAL NUMBER: 525-1008  
REGISTRATION NUMBER: N558WG



**LEE THOMAS**

EAGLE AVIATION • CAE AIRPORT • COLUMBIA, SC

803.429.7408 CELL • LTHOMAS@EAGLE-AVIATION.COM • EAGLE-AVIATION.COM

#EAGLESALESTEAM #EAGLEAVIATIONSC



**HIGHLIGHTS**

- 2018 Model delivered Dec 2018
- Garmin 3000 Avionics Suite
- Airstair Entry Door

**AIRFRAME**

- 1,142 Hours Total Time Airframe
- 1,009 Total Landings
- No Known Damage History

**ENGINES**

Williams FJ44-1AP (5000 TBO)

Engine Program: TAP Blue

**LEFT**

Serial Number: 290431

1,142 Total Hours

1,009 Total Cycles

**RIGHT**

Serial Number: 290432

1,142 Total Hours

1,009 Total Cycles

**INTERIOR**

- Raffia Interior package
- Seating for 6 in a Center Club Configuration with a RH Side-Facing Seat and Belted Flushing Potty
- Veneer Wood-Work and Dual Executive Tables
- Left-Hand Storage Cabinet
- 115 AC Outlets with USB

**EXTERIOR**

Overall Matterhorn White Base with Navy Blue Metallic, Coral Red Pearl & Silver Metallic Stripes

**AVIONICS**

- Garmin 3000 integrated Avionics System
- Dual VHF Communication and Navigation Transceivers
- Single Rockwell Collins DME-4000
- Dual Garmin FMS with LNAV/VNAV and LPV approaches
- Dual Garmin GTX 3000 Transponders with ADS-B Out capability
- Garmin GRS 77 Dual Attitude Heading Reference Systems (AHRS)
- Provisions for Cockpit CVR
- Artex C406-N Three Frequency ELT
- GWX 70 Weather Radar

**ADDITIONAL EQUIPMENT & OPTIONS**

- Synthetic Vision Technology
- VHF Datalink Radio
- Intercom
- Airstair Cabin Entry Door
- XM Graphical Weather (contiguous U.S only, subscription required)
- Garmin GTS TCAS I

Aircraft Specifications Subject To Verification Upon Inspection. Aircraft Subject to Prior Sale or Withdrawal from Market.



**LEE THOMAS**

**EAGLE AVIATION • CAE AIRPORT • COLUMBIA, SC**

**803.429.7408 CELL • LTHOMAS@EAGLE-AVIATION.COM • EAGLE-AVIATION.COM**

**#EAGLESALESTEAM #EAGLEAVIATIONSC**



2018 CITATION M2

SERIAL NUMBER: 525-1008 • REGISTRATION NUMBER: N558WG



Aircraft Specifications Subject To Verification Upon Inspection. Aircraft Subject to Prior Sale or Withdrawal from Market.



**LEE THOMAS**

**EAGLE AVIATION • CAE AIRPORT • COLUMBIA, SC**

**803.429.7408 CELL • LTHOMAS@EAGLE-AVIATION.COM • EAGLE-AVIATION.COM**

**#EAGLESALESTEAM #EAGLEAVIATIONSC**





Aircraft Specifications Subject To Verification Upon Inspection. Aircraft Subject to Prior Sale or Withdrawal from Market.



**LEE THOMAS**

**EAGLE AVIATION • CAE AIRPORT • COLUMBIA, SC**

**803.429.7408 CELL • LTHOMAS@EAGLE-AVIATION.COM • EAGLE-AVIATION.COM**

**#EAGLESALESTEAM #EAGLEAVIATIONSC**





Aircraft Specifications Subject To Verification Upon Inspection. Aircraft Subject to Prior Sale or Withdrawal from Market.



**LEE THOMAS**

**EAGLE AVIATION • CAE AIRPORT • COLUMBIA, SC**

**803.429.7408 CELL • LTHOMAS@EAGLE-AVIATION.COM • EAGLE-AVIATION.COM**

**#EAGLESALESTEAM #EAGLEAVIATIONSC**





Aircraft Specifications Subject To Verification Upon Inspection. Aircraft Subject to Prior Sale or Withdrawal from Market.



**LEE THOMAS**

**EAGLE AVIATION • CAE AIRPORT • COLUMBIA, SC**

**803.429.7408 CELL • LTHOMAS@EAGLE-AVIATION.COM • EAGLE-AVIATION.COM**

**#EAGLESALESTEAM #EAGLEAVIATIONSC**



2018 CITATION M2

SERIAL NUMBER: 525-1008 • REGISTRATION NUMBER: N558WG



Aircraft Specifications Subject To Verification Upon Inspection. Aircraft Subject to Prior Sale or Withdrawal from Market.



**LEE THOMAS**

**EAGLE AVIATION • CAE AIRPORT • COLUMBIA, SC**

**803.429.7408 CELL • LTHOMAS@EAGLE-AVIATION.COM • EAGLE-AVIATION.COM**

**#EAGLESALESTEAM #EAGLEAVIATIONSC**





Aircraft Specifications Subject To Verification Upon Inspection. Aircraft Subject to Prior Sale or Withdrawal from Market.



**LEE THOMAS**

**EAGLE AVIATION • CAE AIRPORT • COLUMBIA, SC**

**803.429.7408 CELL • LTHOMAS@EAGLE-AVIATION.COM • EAGLE-AVIATION.COM**

**#EAGLESALESTEAM #EAGLEAVIATIONSC**





**2018 CITATION M2**

SERIAL NUMBER: 525-1008 • REGISTRATION NUMBER: N558WG



Aircraft Specifications Subject To Verification Upon Inspection. Aircraft Subject to Prior Sale or Withdrawal from Market.



**LEE THOMAS**

**EAGLE AVIATION • CAE AIRPORT • COLUMBIA, SC**

**803.429.7408 CELL • LTHOMAS@EAGLE-AVIATION.COM • EAGLE-AVIATION.COM**

**#EAGLESALESTEAM #EAGLEAVIATIONSC**





Aircraft Specifications Subject To Verification Upon Inspection. Aircraft Subject to Prior Sale or Withdrawal from Market.



**LEE THOMAS**

**EAGLE AVIATION • CAE AIRPORT • COLUMBIA, SC**

**803.429.7408 CELL • LTHOMAS@EAGLE-AVIATION.COM • EAGLE-AVIATION.COM**

**#EAGLESALESTEAM #EAGLEAVIATIONSC**





Aircraft Specifications Subject To Verification Upon Inspection. Aircraft Subject to Prior Sale or Withdrawal from Market.



**LEE THOMAS**

**EAGLE AVIATION • CAE AIRPORT • COLUMBIA, SC**

**803.429.7408 CELL • LTHOMAS@EAGLE-AVIATION.COM • EAGLE-AVIATION.COM**

**#EAGLESALESTEAM #EAGLEAVIATIONSC**





Aircraft Specifications Subject To Verification Upon Inspection. Aircraft Subject to Prior Sale or Withdrawal from Market.



**LEE THOMAS**

**EAGLE AVIATION • CAE AIRPORT • COLUMBIA, SC**

**803.429.7408 CELL • LTHOMAS@EAGLE-AVIATION.COM • EAGLE-AVIATION.COM**

**#EAGLESALESTEAM #EAGLEAVIATIONSC**





Aircraft Specifications Subject To Verification Upon Inspection. Aircraft Subject to Prior Sale or Withdrawal from Market.



**LEE THOMAS**

**EAGLE AVIATION • CAE AIRPORT • COLUMBIA, SC**

**803.429.7408 CELL • LTHOMAS@EAGLE-AVIATION.COM • EAGLE-AVIATION.COM**

**#EAGLESALESTEAM #EAGLEAVIATIONSC**





Aircraft Specifications Subject To Verification Upon Inspection. Aircraft Subject to Prior Sale or Withdrawal from Market.



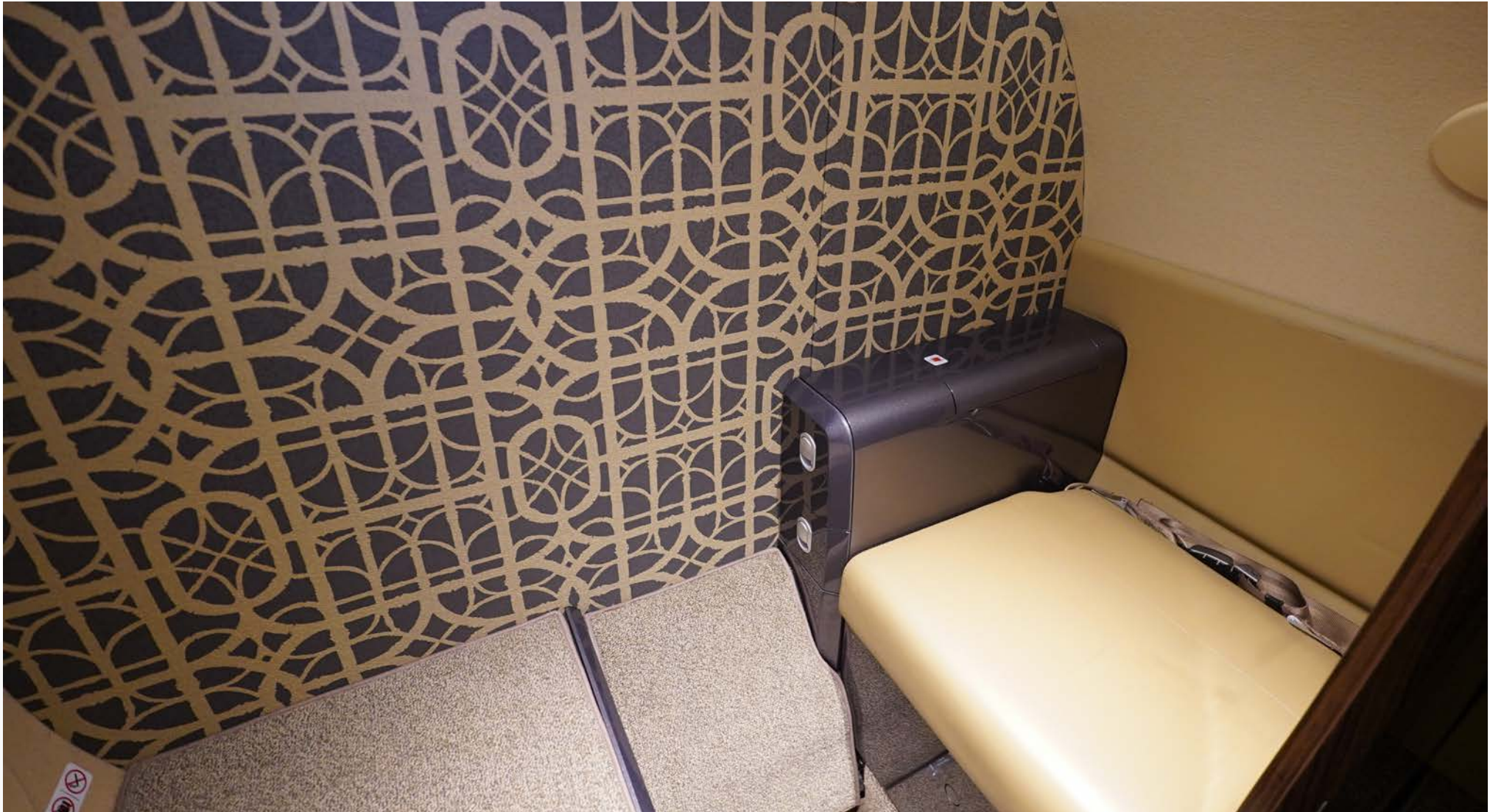
**LEE THOMAS**

**EAGLE AVIATION • CAE AIRPORT • COLUMBIA, SC**

**803.429.7408 CELL • LTHOMAS@EAGLE-AVIATION.COM • EAGLE-AVIATION.COM**

**#EAGLESALESTEAM #EAGLEAVIATIONSC**





Aircraft Specifications Subject To Verification Upon Inspection. Aircraft Subject to Prior Sale or Withdrawal from Market.



**LEE THOMAS**

**EAGLE AVIATION • CAE AIRPORT • COLUMBIA, SC**

**803.429.7408 CELL • LTHOMAS@EAGLE-AVIATION.COM • EAGLE-AVIATION.COM**

**#EAGLESALESTEAM #EAGLEAVIATIONSC**





Aircraft Specifications Subject To Verification Upon Inspection. Aircraft Subject to Prior Sale or Withdrawal from Market.



**LEE THOMAS**

**EAGLE AVIATION • CAE AIRPORT • COLUMBIA, SC**

**803.429.7408 CELL • LTHOMAS@EAGLE-AVIATION.COM • EAGLE-AVIATION.COM**

**#EAGLESALESTEAM #EAGLEAVIATIONSC**







Aircraft Specifications Subject To Verification Upon Inspection. Aircraft Subject to Prior Sale or Withdrawal from Market.



**LEE THOMAS**

**EAGLE AVIATION • CAE AIRPORT • COLUMBIA, SC**

**803.429.7408 CELL • LTHOMAS@EAGLE-AVIATION.COM • EAGLE-AVIATION.COM**

**#EAGLESALESTEAM #EAGLEAVIATIONSC**





Aircraft Specifications Subject To Verification Upon Inspection. Aircraft Subject to Prior Sale or Withdrawal from Market.



**LEE THOMAS**

**EAGLE AVIATION • CAE AIRPORT • COLUMBIA, SC**

**803.429.7408 CELL • LTHOMAS@EAGLE-AVIATION.COM • EAGLE-AVIATION.COM**

**#EAGLESALESTEAM #EAGLEAVIATIONSC**





Aircraft Specifications Subject To Verification Upon Inspection. Aircraft Subject to Prior Sale or Withdrawal from Market.



**LEE THOMAS**

**EAGLE AVIATION • CAE AIRPORT • COLUMBIA, SC**

**803.429.7408 CELL • LTHOMAS@EAGLE-AVIATION.COM • EAGLE-AVIATION.COM**

**#EAGLESALESTEAM #EAGLEAVIATIONSC**





Buying and selling a personal or corporate aircraft can be an overwhelming process. It requires a thorough understanding of market conditions, aircraft availability, costs, maintenance expectations, and the documentation required to pass a clear title from one entity to another. Since 1967, clients have sought to partner with Eagle Aviation. Through the years we have assembled a team of aircraft sales, research and support personnel who devote all of their time making certain they are in constant contact with the world market. Eagle has worked hard to become a leader in pre-owned aircraft sales and we would love to partner with you on your next aircraft journey.

### **EAGLE AVIATION IS AN ACCREDITED DEALER WITH IADA**

The International Aircraft Dealers Association is a professional association of aircraft dealers, brokers, and business aviation support service companies that conduct business in more than 100 countries.

The association began in 1991, when eight of the country's leading aircraft dealers determined that aircraft buyers and sellers desired the highest level of ethics, experience, standards, and trust in their transactions. The organization later established a rigorous accreditation process to complement its 14-point code of ethics that guarantees they will always conduct themselves honorably and represent the best interests of their clients.

Today, fewer than 7 percent of the 730 aircraft dealers worldwide have earned this prestigious accreditation from IADA, which continues its constant presence around the world and international expertise in pre-owned aircraft sales.



 SCAN ME

**LEE THOMAS**  
*President & CEO*

**803.429.7408 cell**

**803.822.5526 ofc**

**LThomas@Eagle-Aviation.com**

[Click Here to View Current Listings for Eagle Aviation](#)

*"This current market for business aircraft certainly provided challenges! Your professionalism, knowledge, and industry experience were keys to the recent sale of our Sovereign. Might I also add that your people skills (including a delightful sense of humor) were much appreciated."* Terry S.



*For Additional Information Please Contact Eagle Aviation*

**AIRCRAFT SALES • PAINT & INTERIOR • MAINTENANCE & AVIONICS  
EXECUTIVE CHARTER & MANAGEMENT • 24/7 LINE SERVICE**

**803.822.5520 • SALES@EAGLE-AVIATION.COM**