



HAGERTY JET GROUP

**1999 Gulfstream V**

s/n 567 - Reg. N50JE



# 1999 Gulfstream V

s/n 567 - Reg. N50JE

## AIRFRAME: As of August 8, 2017

Total Time: 8,823  
Cycles: 4,189

## ENGINES: BR700-710A1-10 • Maintained On Condition

s/n	Time Since New	Cycles	Program
11241	8,823	4,189	Rolls Royce Corporate Care
11242	8,823	4,189	Rolls Royce Corporate Care

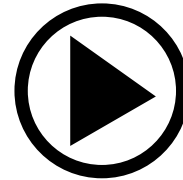
## APU: HONEYWELL RE220

S/N	Time Since New	Cycles	Program
P-201	4,135	TBD	None

## HIGHLIGHTS

- 16 Passenger Four-Zone Aft Galley Configuration
- 2014 Paint and Interior
- Two U.S. Owners Since New
- Engines Enrolled on Rolls Royce Corporate Care
- GoGo Wifi and HD-710 Swift Broadband Internet
- Recent 24 Month Inspection by Gulfstream, Westfield
- Currently Operated Part 135 in the New York area

**CLICK FOR VR TOUR**



## INTERIOR: Completely refurbished by West Star in April, 2014

Four-Zone, Sixteen (16) passenger aft galley configuration with an optional certified crew rest area.

The first cabin zone features (1) single side-facing divan on the left-hand side opposite a (4) place divan. Cabin Zone 2 features two (2) forward facing single chairs and one (1) aft facing single chair. Zone 3 features four (4) club chairs with fold out tables. The Aft cabin consists of a four (4) place conference group opposite a credenza.

This interior is uniquely designed with an open floorplan and higher seating capacity. Upon entering this GV, it provides an open view of the entire cabin that is not common in many other Gulfstreams because there is no bulkhead or closet obstructing the view from the main cabin door.

Aft full-service galley featuring gasper cooled storage, wine chiller, trash compactor, microwave oven, coffee maker, espresso machine and a steam oven. The forward crew and full service aft lavatories are equipped with vacuum toilets.

The interior is currently configured for (16) passengers but an alternative interior arrangement offers a (14) passenger configuration with a work station on the forward right-hand bulkhead with an aft-facing single club chair. Floorplan options are available upon request.

08162017

ALL SPECIFICATIONS ARE SUBJECT TO VERIFICATION UPON INSPECTION - AIRCRAFT SUBJECT TO PRIOR SALE OR MARKET REMOVAL

# 1999 Gulfstream V

s/n 567 - Reg. N50JE

## **ENTERTAINMENT & COMMUNICATIONS:**

The entertainment system displays Blu-Ray/DVD, Airshow Genesys and the external camera on the cabin monitors. There are five (5) individual monitors concealed in the window panels of each single seat and three (3) 14" monitors on the forward and aft bulkheads and above the credenza. USB charging ports have been installed at each single chair and throughout the cabin. The Bose Cabin audio system offers a bridge to play music through Sonos (provided as loose equipment.)

The aircraft is equipped with a Honeywell Satcom plus HD-710 Swift Broadband - Honeywell MCS-7147 Aero H+ Satcom. This system provides worldwide calls and internet access at Swift Broadband speeds. The airplane is also equipped with the Aircell GoGo 4000 Wifi for domestic telephone and internet access. Calls are supported through the Aircell Axxess 2 cabin handsets located throughout the cabin.

## **EXTERIOR: Painted by West Star Aviation April, 2014**

Overall vestal white upper fuselage with grey and blue stripes. "Bandito" windshield paint.

## **Maintenance:**

This aircraft has been owned and operated by only two U.S. owners since new. The original owner is one of the largest Gulfstream operators and it sold to the current owner in December, 2013. It is currently operated on a Part 135 certificate and based in the New York Metropolitan area. No known damage history. Maintenance is tracked on CMP. Current Status reports are available upon request.

The aircraft is routinely maintained by Gulfstream's Westfield service center where it had the 192/96 Month Inspections complied with in 2015 and a 24 Month Inspection in August 2017.

The BR-710 Rolls Royce engines are maintained On Condition and have never been through a major shop visit which will be covered by Rolls Royce Corporate Care. The RRCC published 2017 hourly rate is \$475.93 per engine. The APU is not enrolled on MSP. The avionics are enrolled on HAPP.

TCAS 7.1 and ADSB-Out have been complied with. The final wiring provisions for the FANS/CPLDC were installed during the 192-month inspection to avoid the cost and downtime of removing the interior. Estimates are available upon request.

08162017

ALL SPECIFICATIONS ARE SUBJECT TO VERIFICATION UPON INSPECTION - AIRCRAFT SUBJECT TO PRIOR SALE OR MARKET REMOVAL

# 1999 Gulfstream V

s/n 567 - Reg. N50JE

## AVIONICS:

- SPZ-8500 6 Tube EFIS Flight director
- Dual VHF w/ 8.33 Spacing
- Dual VIR 432
- Dual DME 442
- Dual ADF 462
- Dual TDR 94D w/ Enhanced Flight ID
- Dual HF-9000 w/Selcal
- Triple Laseref III IRS
- Dual CD-810 FMS Display Units (7007549-901)
- Primus 880 Color Radar
- **TCAS II w/ Change 7.1**
- **ADSB-Out**
- Dual RT-300 Radar altimeter
- Dual Collins DME 442
- Honeywell Mark V EGPWS W/Windshear
- Aircell Axxess 2 W/ ATG 4000
- **Honeywell MCS 7147 Aero H+SATCOM**
- Teledyne Cockpit Printer
- Artex 406 MHZ ELT
- Cockpit Voice Recorder
- 57 Parameter Flight Data Recorder

## ADDITIONAL FEATURES

- Runway Awareness and Advisory System (RAAS)
- Rosemont Ice Detection System
- Lightning Detection
- Telpar Cockpit Printer
- Wiring Provisions for Head Up Display
- Airshow Genesys
- Aircell Axxess II Telephone System
- **Aircell GoGo 4000 Domestic Wifi**
- **MCS-7147 Aero H+ Satcom with HD-710 SBB**
- Rosen Blue Ray DVD Players (analog display)
- External Tail Camera
- USB charging ports
- High Temp Oven
- Trash Compactor
- Wine Chiller
- Steam Oven
- Coffee & Espresso Maker
- Forward and Aft Lavatories
- Therapeutic Oxygen
- Tail Compartment Storage Box
- Mounting in tail for Tronair Jack
- DL-950 Data Loader

## ASKING PRICE

Price \$10,900,000 USD

08162017

ALL SPECIFICATIONS ARE SUBJECT TO VERIFICATION UPON INSPECTION - AIRCRAFT SUBJECT TO PRIOR SALE OR MARKET REMOVAL



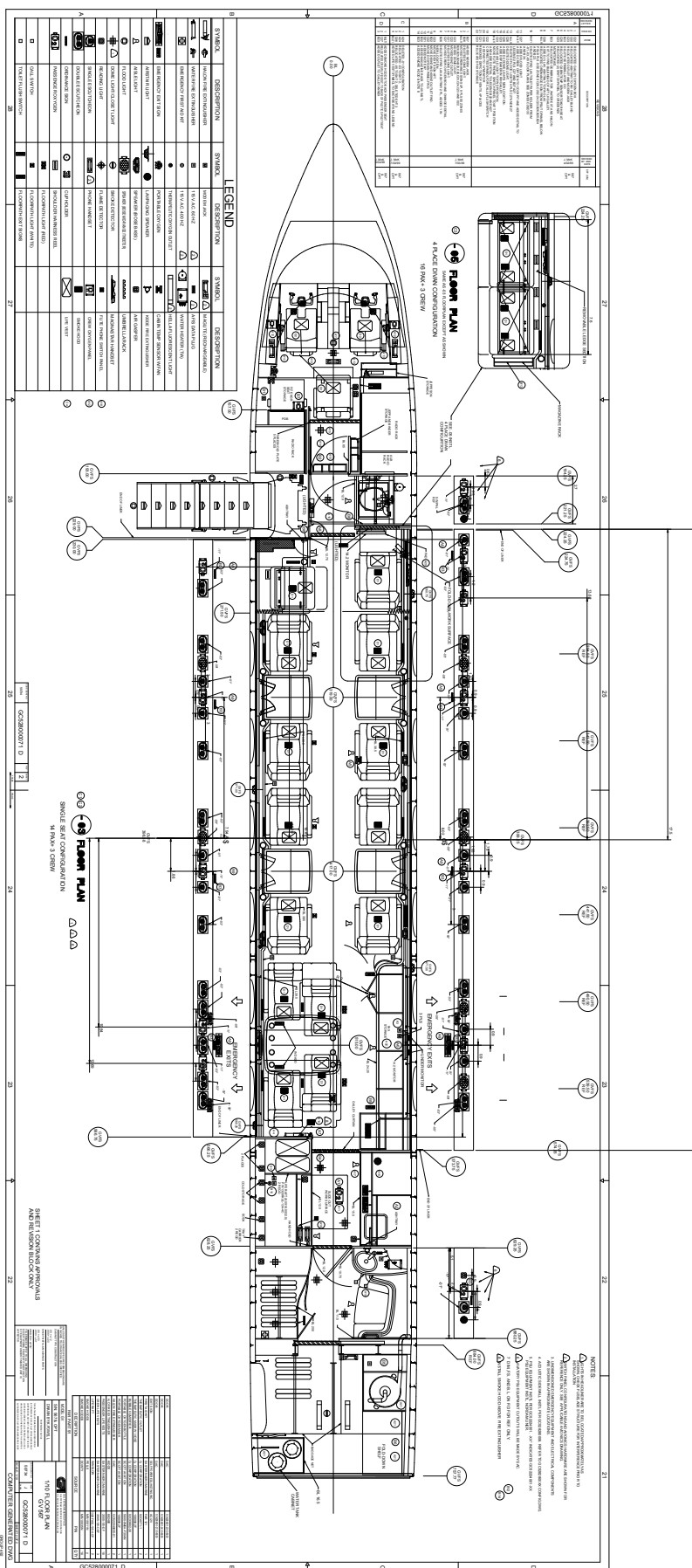












SYMBOL	DESCRIPTION	SYMBOL	DESCRIPTION
...	...	...	...
...	...	...	...
...	...	...	...

SYMBOL	DESCRIPTION	SYMBOL	DESCRIPTION
...	...	...	...
...	...	...	...
...	...	...	...

**NOTES**

1. ALL DIMENSIONS ARE IN INCHES UNLESS OTHERWISE SPECIFIED.
2. REFER TO THE MECHANICAL DRAWINGS FOR THE LOCATION AND INSTALLATION OF ALL ELECTRICAL COMPONENTS.
3. SEE THE SEAT CONFIGURATION DRAWINGS FOR THE SEAT LAYOUT AND EQUIPMENT LOCATION.
4. THE AIRCRAFT SHALL BE CONFORMANT WITH THE APPLICABLE FEDERAL AVIATION REGULATIONS (FAR) AND TRANSPORTATION REGULATIONS FOR AIRCRAFT INTERIOR EQUIPMENT (TSO).
5. THE AIRCRAFT SHALL BE CONFORMANT WITH THE APPLICABLE FEDERAL AVIATION REGULATIONS (FAR) AND TRANSPORTATION REGULATIONS FOR AIRCRAFT INTERIOR EQUIPMENT (TSO).

NO.	DESCRIPTION	DATE
1	...	...
2	...	...
3	...	...
4	...	...
5	...	...
6	...	...
7	...	...
8	...	...
9	...	...
10	...	...
11	...	...
12	...	...
13	...	...
14	...	...
15	...	...
16	...	...
17	...	...
18	...	...
19	...	...
20	...	...
21	...	...
22	...	...
23	...	...
24	...	...
25	...	...
26	...	...
27	...	...
28	...	...
29	...	...
30	...	...
31	...	...
32	...	...
33	...	...
34	...	...
35	...	...
36	...	...
37	...	...
38	...	...
39	...	...
40	...	...
41	...	...
42	...	...
43	...	...
44	...	...
45	...	...
46	...	...
47	...	...
48	...	...
49	...	...
50	...	...
51	...	...
52	...	...
53	...	...
54	...	...
55	...	...
56	...	...
57	...	...
58	...	...
59	...	...
60	...	...
61	...	...
62	...	...
63	...	...
64	...	...
65	...	...
66	...	...
67	...	...
68	...	...
69	...	...
70	...	...
71	...	...
72	...	...
73	...	...
74	...	...
75	...	...
76	...	...
77	...	...
78	...	...
79	...	...
80	...	...



130 Habersham Street - Savannah, Georgia 31401  
+1.912.236.8500